

RBO Planning and Implementation to Achieve Healthy River Outcomes: Keys for Success

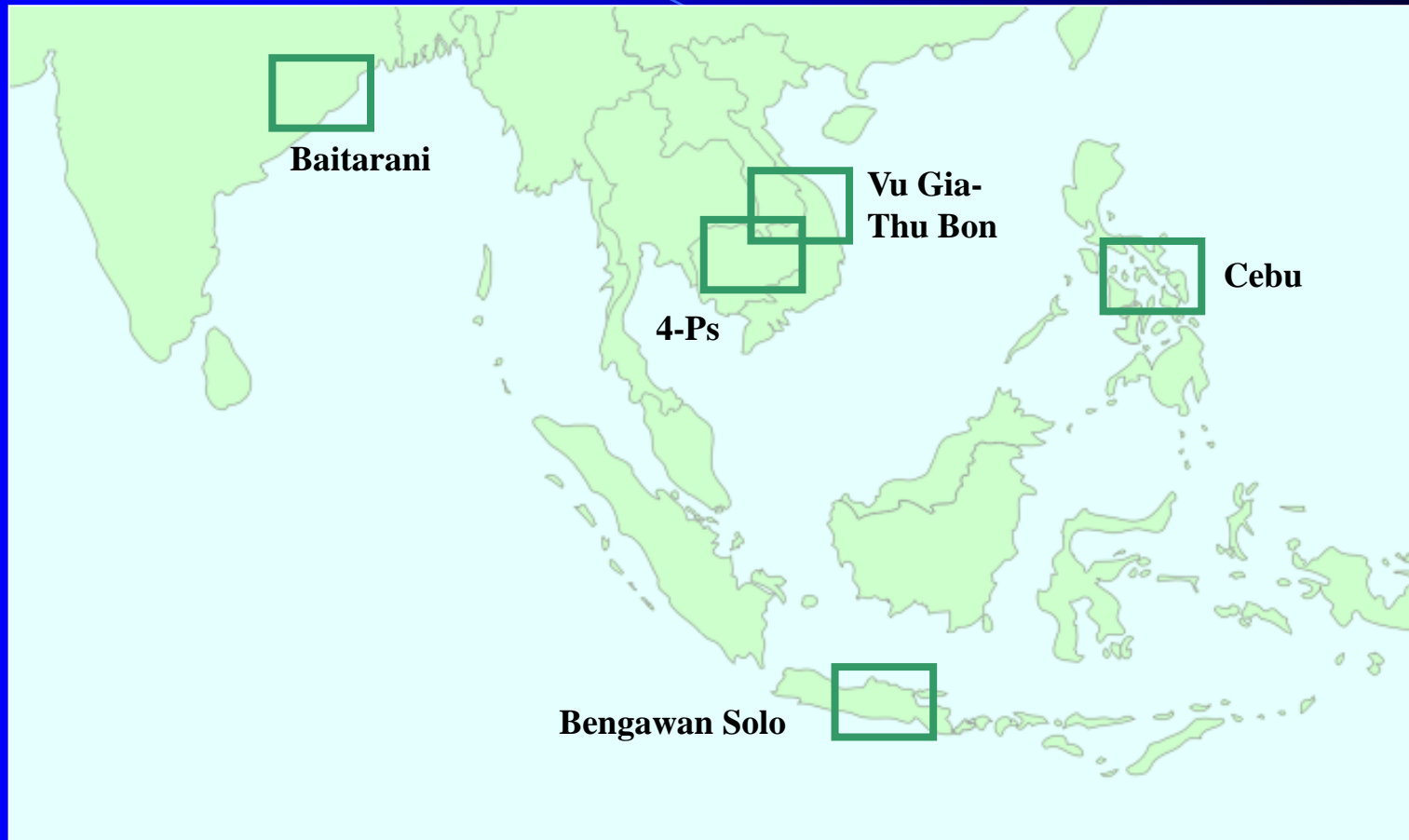
4-7 November 2009, Brisbane, Australia

The Case of the Baitarani River Basin in India

Presentation by:

Name:	Nanda Kumar Mohapatra
Designation:	Director, Hydrology & Water Planning
Organization:	Orissa Water Planning Organisation

Context

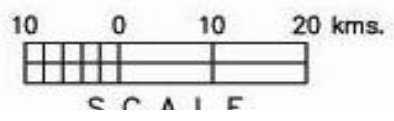


Index Map of Baitarani Basin



REFERENCES :

- Basin Boundary
- River & Nallah



Introduction

Batarani Basin

Area = 14218 sq km

Mostly lies in the State of Orissa

Rainfall

Monsoon = 1339 mm

Non Monsoon = 149 mm

Present Status of Basin Plan

Orissa Water Planning Organisation has made the Prospective Basin Plan based on Spiral Studies

- **Basin being Mineral Rich – Mining Activity & Industrial Water Demand has increased calling for fresh look at the multisectoral water planning**

New Initiative

- **Batarani Basin has been chosen as one of Five River Basins in Asia & SE Asia for IWRM under RETA 6470 – ADB administered assistance**
- **River Basin Organisation of the basin is being formed under the state resolution**
- **The Basin Profiling and the Investment plan being prepared in a participatory approach & will be vetted by the RBO for implementation**

River Basin Plan Development and Implementation to Achieve Healthy River Outcomes

Basin plan development & implementation issues

- ✓ **Upper Catchment has mining, siltation, GW contamination and Agriculture – Industry conflict**
- ✓ **Safeguard genetic diversity of Similipal Biosphere (UNESCO) – wild life sanctuary**
- ✓ **Lower Catchment has coastal plains, GW saline ingress issues**
- ✓ **The Lower Catchment also has India's second largest Mangroove ecosystem – ofcourse here both Brahmani & Baitarani river joins to form the delta.**

Ongoing / Planned Initiatives on River Basin Plan Development and Implementation for Healthy River Outcomes

- ✓ Storage dams and barrages are under construction
- ✓ check dam structures are also planned to check soil erosion & provide industrial water supply
- ✓ Development of creek Irrigation & Control Ground water extraction . Adoption of GW recharge for checking saline ingress are being planned for

Implementation

River Basin Plan Development and Implementation for Healthy River Outcomes: Keys for Success in the Baitarani River Basin

Participation of community through RBO for water conservation, utilisation

- **Construction of exclusive Municipal & Industrial Water Supply Schemes**
- **Government Corporate & Society for Water Infrastructure Planning & Implementation**
 - **Industries to coexist with agriculture participate in technology support for enhancement of Water Use efficiency**

Expectations from IWC and its Network of Clients and Partners

- ✓ **Environmental Flow Requirement for coastal Mangrooves and Wild life (crocodiles, Olive Ridley Turtles)**
- ✓ **Economic Saline ingress control methods**
- ✓ **Ground Water Contamination measures from mining activites**

Proposed Collaboration with IWC and its Network of Clients and Partners

**Collaborative Research works for
coastal ecosystem & Biosphere
protection**



Thank You