

River Health Assessment and Restoration/ Improvement: Keys for Success

4-6 November 2009, Brisbane, Australia

The Case of the Mananga-Kotkot-Lusaran River Basins in Metropolitan Cebu, Philippines

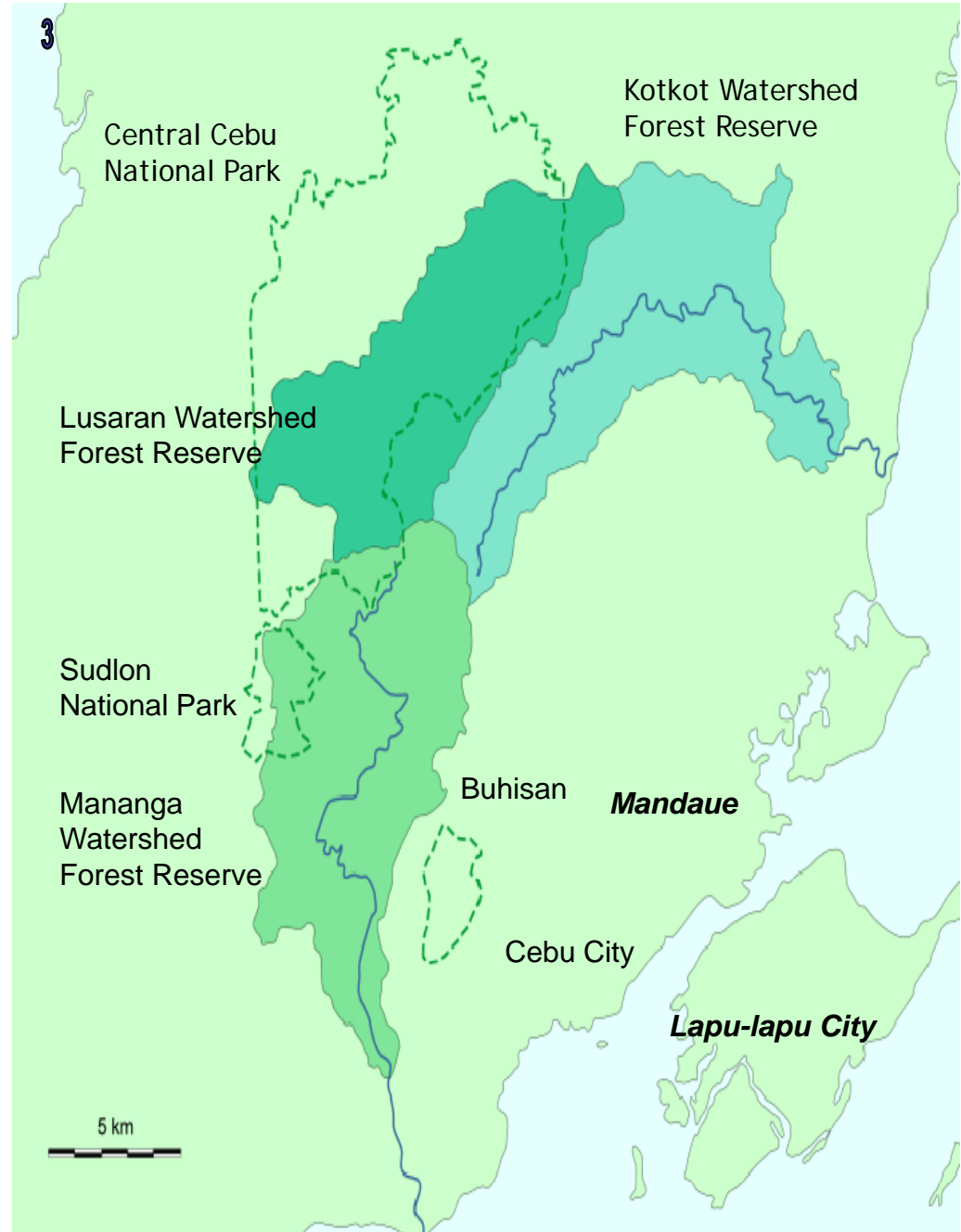
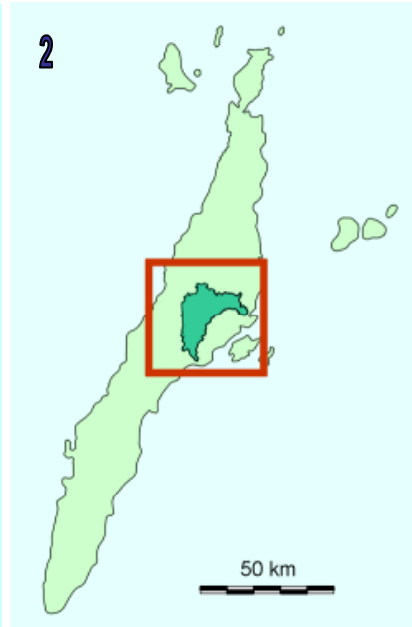
Presentation by:

Name: Armando H. Paredes

Designation: General Manager

Organization: Metropolitan Cebu Water District (MCWD)





THE MAP OF THE CEBU RBO

1. Map of the Philippines-green shaded island is Cebu
2. The Island of Cebu-the green shaded part is Metro Cebu's river basins.
3. The Metro Cebu River Basins

THE HEADWATERS/UPSTREAM OF METRO CEBU'S RIVER BASINS



THE MIDSTREAM OF METRO CEBU'S RIVER BASINS



THE MIDSTREAM OF METRO CEBU'S RIVER BASINS



THE MIDSTREAM OF METRO CEBU'S RIVER BASINS



THE DOWNSTREAM OF METRO CEBU'S RIVER BASINS



Issues Confronting River Health in Metro Cebu's River Basins

Upstream Issues

- Use of Chemical Fertilizers and Pesticides
- Inappropriate farming practices leading to massive soil erosion
- Forest Degradation
- Slash and Burn Activities
- Illegal Cutting of Trees

Midstream Issues

- Sand and gravel quarrying
- Unmanaged septage wastes
- Non-point Source Pollution

Downstream Issues

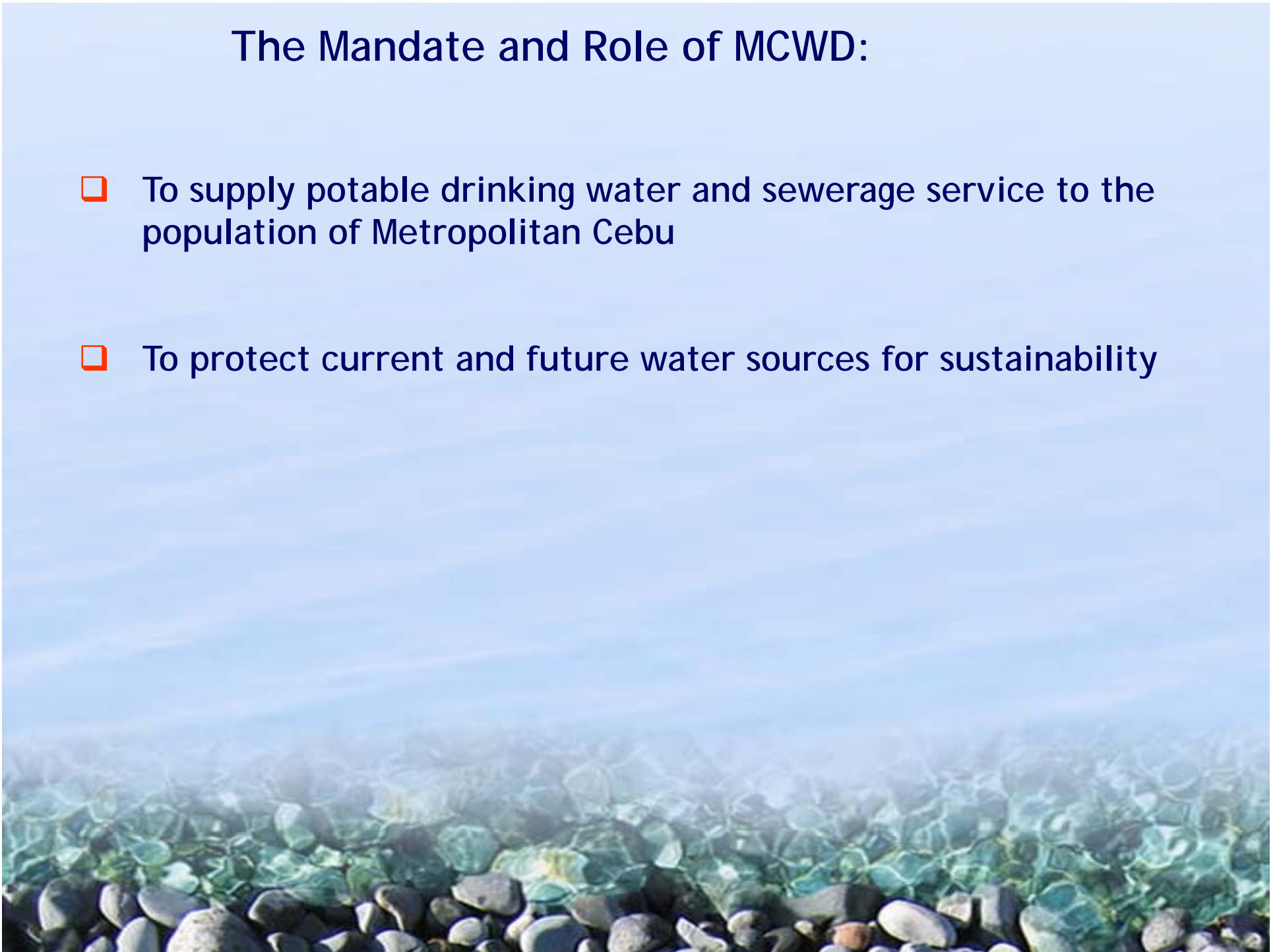
- Improper solid and Liquid waste management
- Polluted waterways
- Dried up rivers

These issues pose as a threat to the health of our rivers and aquatic ecosystem.



The Mandate and Role of MCWD:

- ❑ To supply potable drinking water and sewerage service to the population of Metropolitan Cebu
- ❑ To protect current and future water sources for sustainability



River Health Assessment and Improvement Issues

Priority Assessment Issues:

- Defining the guidelines or framework for river health assessments.
- Delineation and demarcation of river systems necessary for planning and organizing.

Priority Improvement Issues:

- Implementing Integrated Water Resources Management (IWRM).
- Formulation of master plan for the three (3) river basins.



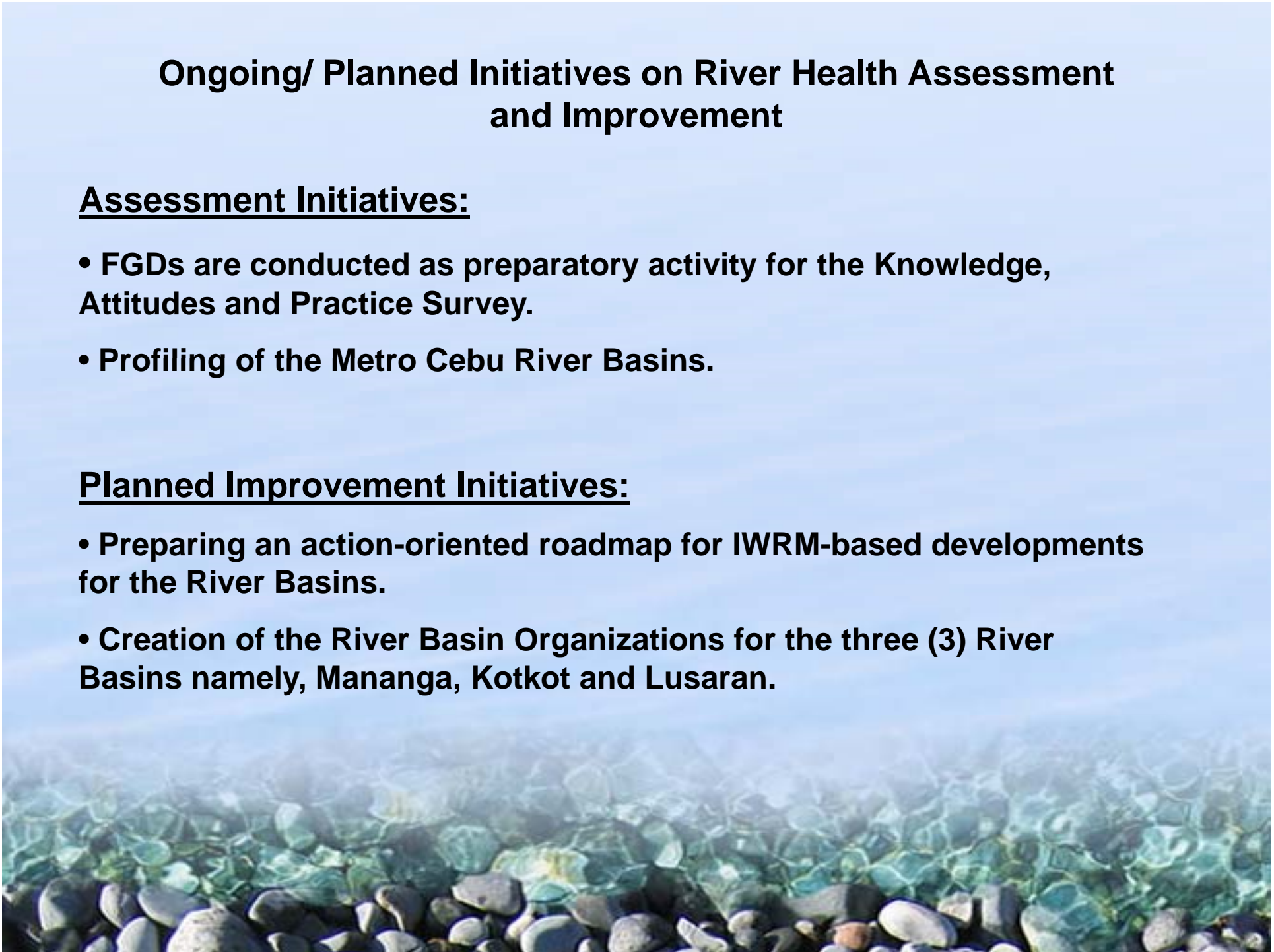
Ongoing/ Planned Initiatives on River Health Assessment and Improvement

Assessment Initiatives:

- FGDs are conducted as preparatory activity for the Knowledge, Attitudes and Practice Survey.
- Profiling of the Metro Cebu River Basins.

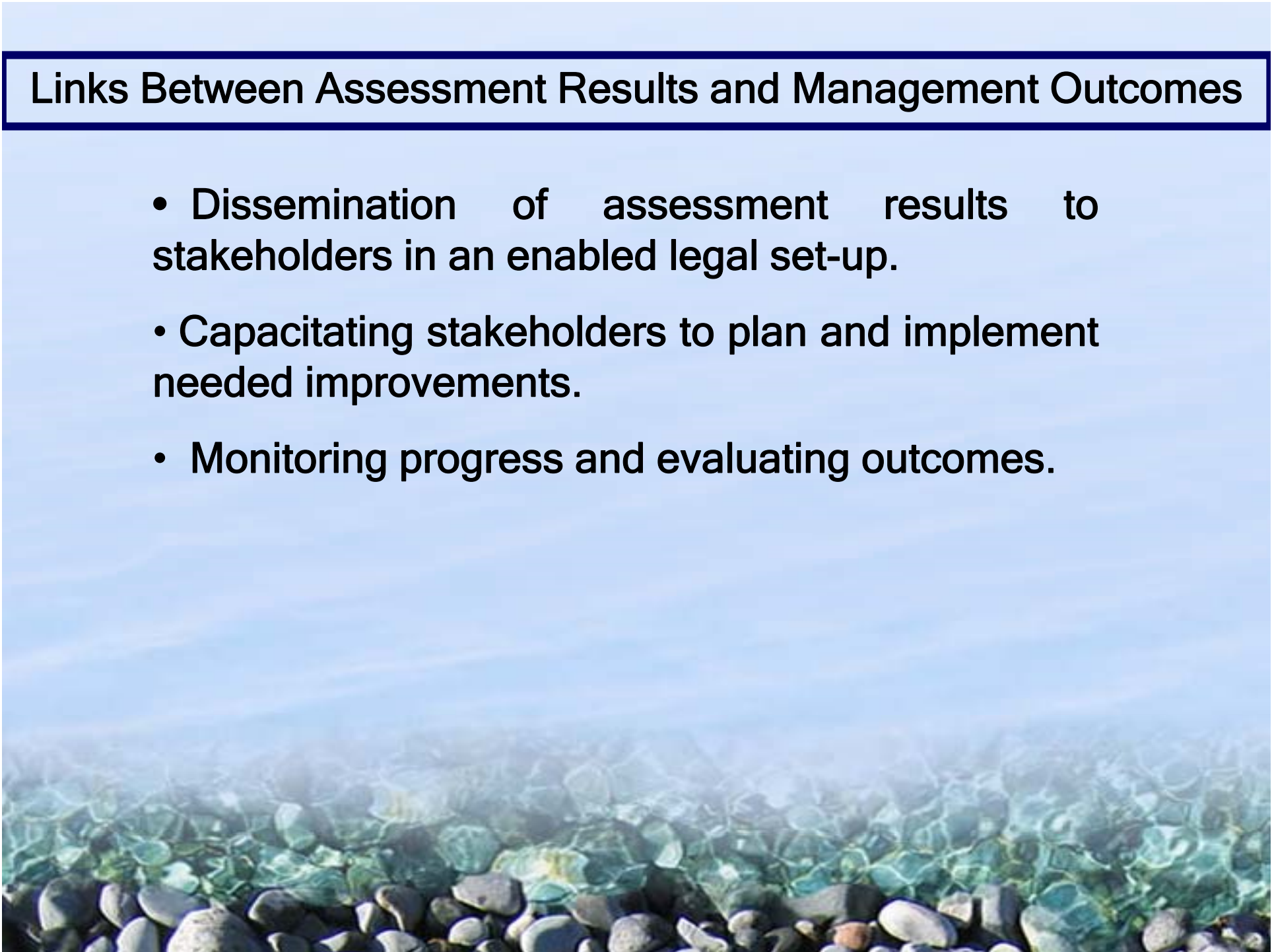
Planned Improvement Initiatives:

- Preparing an action-oriented roadmap for IWRM-based developments for the River Basins.
- Creation of the River Basin Organizations for the three (3) River Basins namely, Mananga, Kotkot and Lusaran.



Links Between Assessment Results and Management Outcomes

- Dissemination of assessment results to stakeholders in an enabled legal set-up.
- Capacitating stakeholders to plan and implement needed improvements.
- Monitoring progress and evaluating outcomes.



River Health Assessment & Improvement: Keys for Success in the Mananga-Kotkot-Lusaran River Basins

Assessment: Keys for Success (KFS):

- Gathering of scientific data and regular monitoring of relevant parameters to measure river health.
- Experience in synthesizing a comprehensive set of data for proper evaluation.

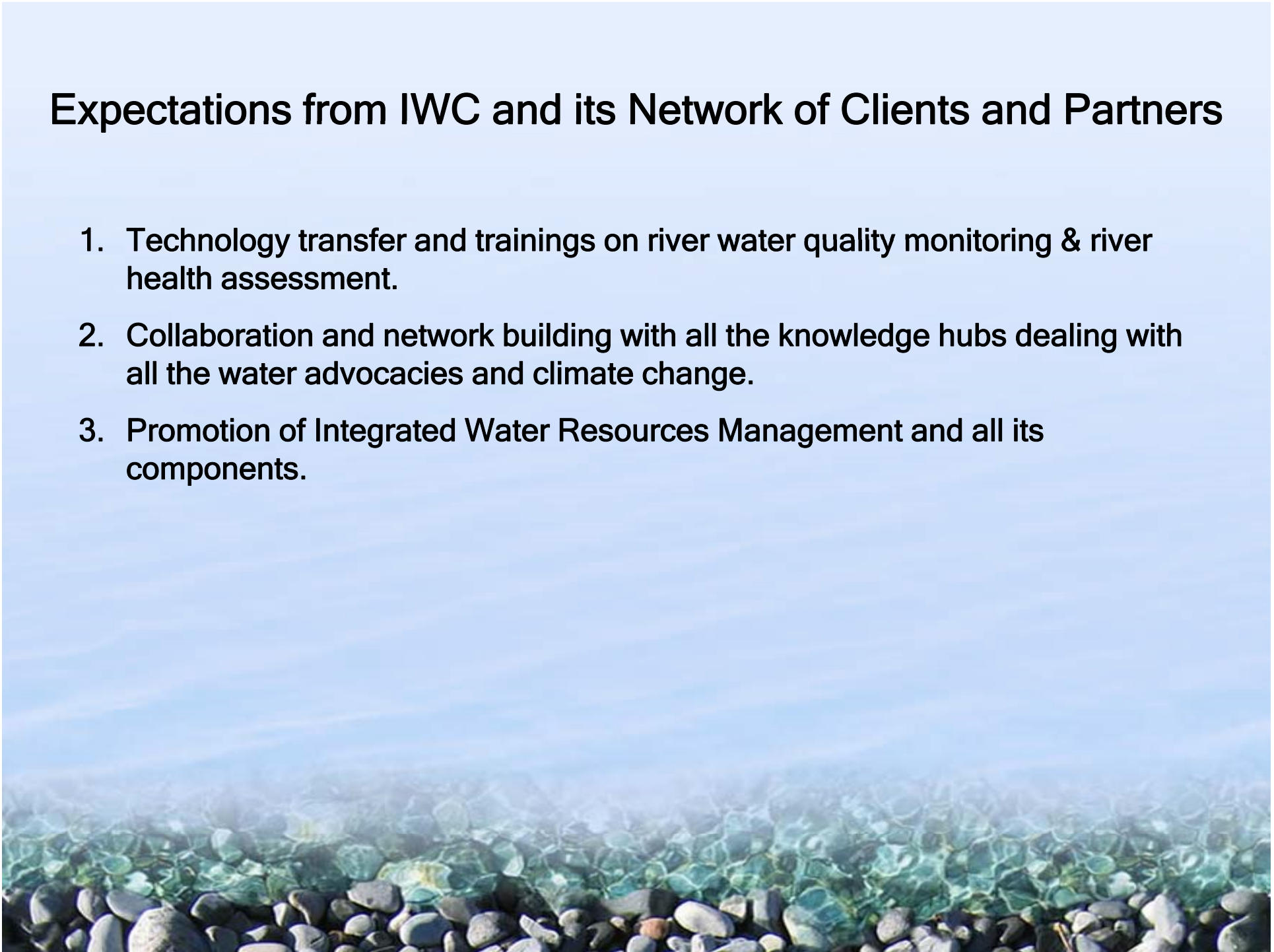
Improvement: Keys for Success (KFS)

- Capacity building for river basin organizations.
- Collaboration with various stakeholders and linkage with the scientific community.



Expectations from IWC and its Network of Clients and Partners

1. Technology transfer and trainings on river water quality monitoring & river health assessment.
2. Collaboration and network building with all the knowledge hubs dealing with all the water advocacies and climate change.
3. Promotion of Integrated Water Resources Management and all its components.



Proposed Collaboration with IWC and its Networks or Clients and Partners

1. Conduct of research on river science for the Metro Cebu's river basins.
2. Capability building and trainings of staff and personnel on river basin organizing and management as well as environmental management.
3. Facilitation in the acquisition and procurement of equipment and tools for data gathering and analysis, e.g. software for simulation & decision support systems.



Rivers are the circulatory system of the continents (Gomi et al., 2002).



...And indeed, rivers have to be cared for... Thank you...

